

Detaljan opis radionica i plenarnih predavanja

Biografije predavača

Plenarna predavanja / Plenary speeches

Plenary speech 1: "Between Clinic and Community: A Transactional Analysis Perspective on the Self in the Age of Fragmentation."



In the 21st century—particularly within Western societies—mental suffering is increasingly expressed through psychosis, borderline forms of emotional dysregulation, substance-induced conditions, and complex trauma. Far from being solely clinical phenomena, these manifestations mirror and are reflected in some of the most urgent crises shaping our collective reality: the resurgence of nationalisms and the resulting geopolitical conflicts and isolation; a pervasive existential uncertainty marked by anxiety across all generations; and forced migration, often leading to exclusion and marginalization. These dynamics are further amplified by the rapid expansion of artificial intelligence across key domains of knowledge, including computer science, biology, and communication.

The contemporary landscape thus begins to resemble a collective, almost paranoid condition—one in which the reliability of our perceptions, thoughts, and shared reality itself is increasingly called into question. From a transactional analysis perspective, the Adult ego state appears to be under siege, along with our capacity to discern and engage with reality. If madness was once confined to psychiatric institutions, today it emerges as a broader social language through which society attempts to understand itself. Reliance on reason alone no longer suffices to illuminate the complexity and opacity of the present; a different path must be envisioned.

We risk becoming trapped in a present experienced as both meaningless and inescapable, progressively losing our capacity for imagination and for envisioning the future. If we were to conceive of the world as an expanded consciousness, it would appear as a consciousness in search of a narrative: a shared story, a global script, with a reclaimed past and a future not merely imagined, but actively and collectively constructed. This generative potential—present within individuals, living systems, and therefore societies—was defined by Eric Berne (1961) as “physis”: an innate vital force that drives growth, transformation, and relational renewal. It is through this force, which permeates the self, that new forms of connection can emerge, intimacy can be relearned and practiced, and both individuals and communities can continue to evolve.

In facing adversity together, we may rediscover the possibility of finding, within chaos, the seed of a new beginning: a reorientation toward our shared humanity, and a patient, committed recovery of our capacity to feel, understand and live more fully.

Zefiro Mellacqua CTA - P

Zefiro Mellacqua is the Medical Director of the Cantonal Psychiatric Clinic (CPC) in Mendrisio aiming to lead the reconfiguration of acute psychiatric care and the diversification as well as integration of both inpatient and home treatment teams, the modernisation of the crisis care pathways both within and without the Clinic and the future development of service users and caregivers experiences monitoring groups in his organization. He also aspires to humanise psychiatry and clinical leadership in the field of mental health in this age of bewilderment.

Medical Doctor, FMH Psychiatrist and Psychotherapist, also Certified Transactional Analyst (CTA-P) by training, he worked as Associate Specialist (RCPsych) in General Adult Psychiatry for the Lambeth Home Treatment Team (South London and Maudsley NHS Foundation Trust) in London (UK) and, as consultant psychiatrist in Switzerland, he later implemented the very first Home Treatment Team in Canton Ticino.

Since 2022, he has been actively involved in the field of psychedelic-assisted therapy (PAT), mainly as a practitioner, by becoming a member of Fondazione Alaya. He is now aiming to develop a permanent PAT training and research program within his organization.

He is also a lecturer at the SUPSI, SSSCI and most recently at the USI Faculty of Biomedical Sciences in Lugano.

In the past, besides his clinical activity both in the public and in the private sector, he worked at the Institute of Psychiatry Psychology and Neuroscience (IoPPN) in London as research fellow in the field of First Psychosis Studies and served on the staff of management and leadership residential programmes at INSEAD in Fontainebleau (France).

Zefiro Mellacqua is the recipient of the Eric Berne Memorial Award 2024.



Beatrijs Dijkman TSTA-E

Composting Stability: the Sacred Task of Tending to a Dying Modernity

In the spirit of phenomenologist Adolf Reinach, this lecture does not seek to define (un)stability, but rather to think with you in the TA manner about it. In 2026, we stand in a reckoning where the water is rising, literally and metaphorical. Modernity's hallucination of stability has sold us Scripts of self-centred entitlement and extractive security, yet we see and feel that its grounds are unravelling. In this lecture we dive into wide ranges of our (un)stability. Using well known philosophical TA stances, that are altered into a different reality:

People are OK, yet within modernity we have forgotten how to act OK.
People can change yet sustainable change is difficult to maintain.

People can think, yet we seem to follow leaders who just think about themselves.

As Transactional Analysts, we work under the illusion that analysing transactions grants us power or resolution. But what if we see TA, not as a tool for fixing the field, but as a discipline for tending to what is dying through modernity? This lecture is an invitation to accompany others in a purposeful destabilization. By composting our stabilities, we create space for contemplating becoming. I will ask you: How have you been owned or controlled by Scripts of stability. What influence do you take in your relationships to alter power dynamics, systemic change? How does our common craving for economic and relational security reinforce our separability from nature, ancestors, and the more-than-human world? Together we will not seek a map to stabilize the future, but a rhythm to walk our talk, where instability becomes a portal to a deeper, entangled presence.

Beatrijs Dijkman, TSTA-E, lives in the Netherlands where she works in higher education and as TA educator and supervisor. She is deeply inspired by the work of Vanessa Machado de Oliveira and is seeking ways to creatively sit with the complexities of our time. She explores how TA can be used to tend to what is dying in our modern systems. A process that requires acknowledging the discomfort that can also be found within TA itself. Beatrijs serves also as co-chair of Professional Standards Committee of ITAA and is interested in dynamics around exams and development through qualification.



Sandra Wilson, TSTA-O

Plenary speech: Stability, Rigidity and Ethical Leadership in Times of Uncertainty

This session explores how leaders can guide organisations and societies during periods of uncertainty and rapid change. It highlights the importance of leadership stability, where clear direction, consistent values, and a long-term vision help maintain trust and confidence in challenging times.

The session also examines the difference between principled leadership and rigidity. While leaders must remain committed to core values, excessive inflexibility can limit innovation and responsiveness. Effective leadership requires balancing strong principles with adaptability. A key focus is ethical leadership, emphasising transparency, accountability, and responsible decision-making. By combining ethical integrity with openness to change, leaders can navigate uncertainty while sustaining trust and institutional stability. Ultimately, this session encourages leaders to reflect on how they can remain principled without becoming rigid, and how ethical leadership can serve as a guiding framework for sustainable and responsible decision-making in an unpredictable world.

Radionice / Workshops



Berit Fahlen TSTA- P

Play: A way to build resilience

In this workshop, we will explore two different purposes of play, originated by D.Winnicot.

- By playing, we find ourselves
- Through rupture- and repair processes in play, we can build a reliable relationship

To play, we need to be courageous and prepared to leave our controlled comfort zone and challenge stability. In play we don't know what will happen next. We need to tolerate the uncertainty because there will always be moments of instability. When the relation is safe, we are able to relate, create, explore and integrate experiences by playing. Play is one of the core concepts in Co Creative TA and by using our playfulness in our work, we will expand our capacities to be absolutely present centered, in we-ness and with shared responsibility.

Berit is a TSTA in the psychoteraphy field. She is a partner of Korus Academy for Transactional Analysis, which provides TA training and supervision. She is also working with clients in her private practice.

Berit has a long experience of working with trauma since she was a previous owner of a treatment community, specialized on severely traumatized children and teenagers. The emphasis has always been to focus on the salutogenetic perspective. That fits well with the Co Creative approach. As a trainer and supervisor it's her aim to provide a safe space, empowering others so they can find their unique voice and professional identity.

Berit is representing Sweden as a delegate in EATA.

Maja Pavlov TSTA-P

U zoni stabilne nestabilnosti



Na ovoj radionici, (ne)stabilnost će se istražiti kao dinamičko polje u kojem se prepliću lično, relacijsko i porodično - socijalno. Poseban fokus biće na tome kako iskustvo neizvesnosti utiče na identitet klijenta, ali i na terapijski odnos, uključujući transferne i kontratransferne procese, potrebu za kontrolom, kao i kapacitet za

tolerisanje neizvesnosti kod oba učesnika.

Iz perspektive Transakcione Analize, ali i egzistencijalne terapije, simptomi i krize mogu se razumeti kao poziv na preispitivanje skriptnih odluka koje teže rigidnosti i iluziji stabilnosti. Terapijski odnos tada postaje prostor u kojem se razvija nova vrsta stabilnosti, ne kao odsustvo promene, već kao sposobnost ostajanja u kontaktu sa sobom i drugim u uslovima neizvesnosti.

Radionica (90 minuta) biće iskustveno orijentisana i istraživaće kako terapeuti mogu raditi sa (ne)stabilnošću: kroz razvoj relacijske sigurnosti, jačanje kapaciteta za mentalizaciju, prepoznavanje sopstvenih reakcija na nesigurnost i podršku klijentima u izgradnji fleksibilnijih, autentičnijih načina bivanja. Posebna pažnja biće posvećena pitanju: šta zaista znači 'biti stabilan' u svetu koji je suštinski nestabilan?

Maja Pavlov je diplomirala psihologiju na Filozofskom fakultetu u Novom Sadu. Ona je Nacionalno sertifikovani Transakcioni Analitičar (Savez Društava Psihoterapeuta Srbije), kao i međunarodno sertifikovani transakcioni analitičar - CTA (USA, San Francisco, ITAA) i redovni trener i supervizor transakcione analize – TSTA (Rosrath, Nemačka, EATA). Unapređujući veštine postaje i NLP trener (IANLP), a kasnije i psihodramski savetnik (RAIP). Nakon višegodišnjih rezidencijalnih seminara sa Ričardom Erskinom (Francuska), stekla je pravo na sertifikaciju iz Integrativne psihoterapije (CIIP), od strane IIPA u Ljubljani 2025. godine.

Od 1999. godine Maja vodi razvojne, a kasnije i edukativne i supervizijske grupe TA, kao i NLP treninge u Beogradu, Novom Sadu, Subotici i Rijeci. Razvijajući svoju privatnu psihoterapijsku praksu, više od dve decenije neguje individualni psihoterapijski rad, rad sa parovima, kao i psihoterapijskim grupama ljudi. Radeći na promeni pojedinaca i grupa, veruje da promena podstiče rast. Organizacija HRIO koju vodi bavi se TA edukacijama, supervizijama i pripremom kolega za međunarodne CTA ispite, kao i nivoe za PTSTA i TSTA zvanja.

Živi sa mužem i sinom u Novom Sadu.



Sandra Wilson TSTA-O

Instability in the relational field – Working at the Growing Edge

This workshop explores the experience of instability within the relational field and its significance for therapeutic and organisational practice. Periods of uncertainty, disruption, or emotional intensity often arise at the growing edge of development, where familiar relational patterns are challenged, and new possibilities begin to emerge.

Drawing on relational TA and psychodynamic perspectives, the workshop will examine how instability may appear within the co-created field between practitioner and client, group, or organisation. Particular attention will be given to processes such as transference, counter-transference, projection, parallel process, and defence mechanisms, and to how these dynamics can signal the surfacing of unconscious material within the relational space.

Through theoretical reflection and experiential discussion, participants will explore how practitioners can remain attentive and responsive to these emerging dynamics, using moments of instability as opportunities for deeper understanding, integration, and growth within therapeutic and organisational contexts.

Josip Bošnjaković PTSTA - P



Život je Pjesma nad pjesmama – Stilovi duhovnosti i religioznosti kao izvor stabilnosti u nestabilnim vremenima

Radionica „Život je Pjesma nad pjesmama“ polazi od pretpostavke da je život u svojoj dubini iskustvo odnosa, ljepote i smisla, a ne samo niz problema

koje treba riješiti. Nadahnuta biblijskom Pjesmom nad pjesmama, radionica promatra čovjeka kao biće koje je stvoreno za ljubav, odnos i zajedništvo, gdje se identitet otkriva u susretu s drugim i s Drugim. Naglašava se kako je ljubav „značenje cjeline“ te da smo svi poput nota u jednoj većoj, smisljenoj, duhovnoj, simfoniji, što otvara perspektivu života kao osobne, relacijske i socijalne stvarnosti. U tom svjetlu, stabilnost ne proizlazi iz kontrole, nego iz pripadanja i sudjelovanja u većoj cjelini. Radionica istražuje kako čovjek raste kroz iskustvo viđenosti, željenosti i odnosa, jer „lice“ (panim) uvijek označava relaciju. Poseban naglasak stavlja se na iskustvo „ovdje i sada“, kao prostora susreta, slavlja i prisutnosti. Istodobno se ne zanemaruju ni težine života – ranjivost, nasilje i unutarnji konflikti – koji su sastavni dio ljudskog puta, ali ne poništavaju snagu ljubavi. Ljubav se pokazuje kao stvarnost koja nadilazi krize jer „mnoge vode ne mogu ugasiti ljubav“. Radionica otvara prostor za osobnu refleksiju: gdje sam ja u toj „pjesmi“ i kako živim svoje odnose. Cilj je pomoći sudionicima da otkriju dublju stabilnost koja ne dolazi iz sigurnosti, nego iz smisla, odnosa i sudjelovanja u ljubavi, kroz prakticiranje duhovnosti.

Josip Bošnjaković rođen je 29. rujna 1978. u Vukovaru te je djetinjstvo je proveo u rodnom mjestu Bapska, gdje je zajedno s obitelji živio do 1991. godine. Za svećenika je zaređen 2003. godine. Doktorirao je iz psihologije na Papinskom sveučilištu Salezijana u Rimu gdje postaje i psihoterapeut smjera transakcijske analize (CTA), a od 2021. je i PTSTA (Provisional Teacher and Supervisor in Transactional Analysis – Privremeni učitelj i supervizor u transakcijskoj analizi). Od 2012. godine zaposlen je na Katoličkom bogoslovnom fakultetu (KBF) u Đakovu Sveučilišta Josipa Jurja Strossmayera u Osijeku te od 2013. godine na Hrvatskom katoličkom sveučilištu u Zagrebu gdje je ujedno i stručni suradnik i supervizor Centra za promicanje dobrobiti ranjivih osoba. Vanjski je suradnik u bogoslovnom sjemeništu u Đakovu. Voditelj je Savjetovališta u Đakovačko-osječkoj nadbiskupiji. Član je Povjerenstva za zaštitu maloljetnika i ranjivih osoba Hrvatske biskupske konferencije. Predsjednik je Hrvatskog društva bračnih i obiteljskih savjetovatelja od 2019. godine, a od 2023. godine voditelj je Poslijediplomskog specijalističkog studija propedeutike psihoterapije i teoterapije na KBF-u u Đakovu. Od 2020. godine Predsjednik je povjerenstva za odobravanje pravaca, organizacija i edukacija pri Hrvatskoj komori psihoterapeuta. U znanstvenim istraživanjima nastavlja se baviti tematikama vezanim za ranjivije skupine u društvu kao i temama koje su usko vezano uz psihološki rast, obitelj, savjetovanje i psihoterapiju (empatija, suosjećanje, milosrđe). Autor je više znanstvenih i

stručnih članaka iz spomenutih područja, te je sudjelovao na više domaćih znanstveno-istraživačkih projekata. U slobodno vrijeme bavi se sportom, učenjem biblijskog hebrejskog jezika, glazbom i boravkom u prirodi.



Barbara Repinc Zupančič STA(P), PTTA(P)

“Some poems don’t rhyme.” Love, Resilience, and (Un)Stability Across Generations

Gilda Radner’s words capture a truth many individuals and communities are living today: life does not always resolve into coherence, fairness, or certainty - and yet, people continue to love, act, and remain present.

In times of social, political, and ecological instability, individuals and communities often seek certainty and safety through patterns that may stabilise, but also rigidify, personal and relational life. From a Transactional Analysis perspective, such patterns can be understood as scripts, games, and stabilising transactions shaped by historical, cultural, and relational contexts.

Drawing on Contextual Transactional Analysis (J. M. Sedgwick), existential perspectives on script (B. Heiller and C. Sills), E. Fromm’s understanding of love as a learnable practice and ethical action, and longitudinal and Indigenous resilience research, the workshop will examine how people and communities live with uncertainty across generations. Particular attention will also be given to bodily awareness in relation to the environment.

Sensorimotor approaches (P. Ogden, J. Fisher) emphasise that healing and presence occur through a moving, responsive body rather than a static one. From a Transactional Analysis perspective, this can be understood as the domain of Physis.

Participants will be invited to reflect on their own resilience resources and, optionally, to explore how previous generations may have faced instability, loss, and hardship. Through guided reflection, paired dialogue, creative expression, and gentle body awareness, the workshop will consider when stability supports growth and when it becomes rigidity, how unspoken existential realities contribute to scripts and psychological games and how courage, everyday actions of love, meaning-making, and relational presence function as grounded forms of resilience and realistic hope in unstable contexts.

My primary education is in pedagogy and the sociology of culture. Throughout my career, I have worked in a variety of social service roles, including child and youth protection, domestic violence work, prevention work with young people, and work with people who misuse drugs. I have had my own private psychotherapy practice since 2008. I have completed training in Transactional Analysis (Psychotherapy). I specialise in child and adolescent psychotherapy and trauma psychotherapy, with a strong interest in existential psychotherapy and creative supervision. I am an Integrative Supervisor and a TA Supervisor, STA (P). I teach and supervise in Slovenia and abroad.

In my work, I use everything I have found useful in my life, including practices that come from

my sources of joy, such as gardening, travelling, mountaineering, and various kinds of handicrafts. In preparing this workshop, I returned to my student years more than 30 years ago, when I was encouraged to read Freud, Lacan, and Durkheim, and, with that knowledge, to interview older "ordinary" people (farmers and workers) about how they survived the horrors of World War II and what survival mechanisms they developed. The hope I gained from that work - real, grounded hope - still supports me when I am dealing with my own difficult situations, and this is what I would like to share with my colleagues in the workshop.



Honza Šimek

Educational Script and Stability: How Learning Environments Shape Development

This workshop explores the concept of the Educational Script. We will examine how individuals form implicit expectations and patterns about learning, teaching, authority, success, and failure — and how these patterns influence their professional and personal development.

A central focus will be the role of stability in the education process. How does stability in the education process support autonomy, competence, and growth? Conversely, how does instability — whether relational, structural, or systemic — shape defensive adaptations, limit learning capacity, or reinforce restrictive script decisions?

Participants will be invited to reflect on their own educational scripts and to consider how schools, training contexts, and supervisory settings either reinforce or transform them. The workshop will combine theoretical input with reflective and experiential elements.

The aim is to deepen understanding of how stability functions as a developmental resource — and how, as educators, supervisors, and trainers, we can consciously create conditions that foster constructive script revision rather than script reinforcement.

Honza Šimek is a mentor, supervisor, and trainer working in the field of education and Transactional Analysis. Originally trained as a teacher of mathematics, physics, and informatics, he has extensive experience teaching at both primary and secondary school levels.

In his current work, he focuses on supporting teachers, school leadership, and school counselling teams through mentoring, supervision, and professional development. His work aims to strengthen the conditions in which teachers and students can learn, develop, and experience school as a meaningful and supportive environment.

He integrates Transactional Analysis with practical experience from schools and is particularly interested in how educational environments shape learning processes, professional development, and autonomy.



Tara Pavić Futač PTSTA-P **Prisutnost u psihoterapijskoj sobi**

U profesionalnom radu oslanjamo se na teorije, modele i intervencije, no istraživanja pokazuju da najveći prediktor psihoterapijskog ishoda nije tehnika, nego kvaliteta odnosa – način na koji se klijent i terapeut susreću (Bordin, 1979; Horvath i sur., 2011). I dok naglašavamo važnost sigurnog terapijskog odnosa, terapijski proces je neizbježno isprepleten nesigurnošću, neusklađenošću i nepredvidljivošću. U takvim trenucima postavlja se ključno pitanje: kako ostati stabilan,

prisutan i dostupan za reparaciju?

Ova radionica istražuje mindfulness kao temeljnu profesionalnu vještinu psihoterapeuta (Martin, 1997; Bruce, i sur., 2010). Mindfulness ne promatramo kao tehniku opuštanja, nego kao kapacitet svjesne prisutnosti – sposobnost da primijetimo vlastite misli, emocije i tjelesne reakcije bez automatske reaktivnosti, uz stav prihvaćanja i znatiželje. Takva prisutnost omogućuje terapeutu da, osim produblivanja empatije:

- produbi kontakt sa sobom i klijentom
- bolje tolerira neizvjesnost i afektivnu intenzivnost
- jasnije prepoznaje transferne i kontratransferne procese
- pristupi intuiciji i kreativnosti u radu
- gradi stabilan i siguran terapijski prostor.

Radionica je namijenjena svima koji žele produbiti svjesnu prisutnost u vlastitom radu i razumjeti kako mindfulness doprinosi profesionalnoj učinkovitosti. Upoznat ćemo se s konceptom ego stanja Svjesni Odrasli (Žvelc, 2010) te istražiti kako njegovo jačanje podržava terapeuta i klijenta, kao i načine njegove integracije u psihoterapijski proces. Sudionici će imati priliku osobno iskusiti mindfulness, reflektirati o vlastitoj prisutnosti i istražiti kako se samoregulacija, prihvaćanje i svjesnost pretaču u stabilniji, sigurniji i dublji terapijski odnos.

Tara Pavić Futač, mag.psych., CTA, PTSTA, psihologinja je i certificirana transakcijska analitičarka u području psihoterapije. Psihologiju sa specijalizacijom iz psihološkog savjetovanja diplomirala je u Beču, a 2023. godine u Njemačkoj je stekla međunarodni certifikat iz transakcijske analize. Pet godina provela je u SOS Dječjem selu Hrvatska, neprofitnoj organizaciji koja pruža izravnu pomoć djeci bez roditelja ili odgovarajuće roditeljske skrbi. Posljednjih se godina specijalizirala za pružanje psihoterapije pojedincima, parovima i grupama u sklopu svoje privatne prakse.

U radu primarno koristi transakcijsku analizu, uz integraciju elemenata kognitivno- bihevioralne terapije (KBT), terapije prihvaćanjem i posvećenošću (ACT), EMDR-a i mindfulnessa. Njezina misija je stvaranje sigurnog prostora u kojem ljudi mogu rasti, osnažiti se i mijenjati. Osim terapijskog rada, Tara je strastvena edukatorica i supervizorica. Vodi radionice ivedukacije za stručnjake pomagačkih zanimanja, ali i za širu javnost. Kao edukatorica transakcijske analize sudjeluje u razvoju novih generacija psihoterapeuta u centru Budi svoj gdje djeluje kao vanjska suradnica. U Hrvatskoj udruzi transakcijskih analitičara obnaša funkciju etičke povjerenice.



Ronen Stilman TSTA-P

Humachina: A Meditation on Human and Machine Consciousness

Transactional analysis is defined as a “social psychology” (ITAA, 2025) and is underpinned by a humanistic philosophy. As such, I will invite participants to explore the impacts of the close relationship between humans and recent technological developments on the personal, interpersonal, and systemic (social and political)

Through theory of consciousness, we will revisit some foundational TA concepts and consider the socio-psycho-somatic implications of what a growing number of thinkers and researchers consider to be the most important development of our time (Stilman,2026).

Ronen Stilman, MSc (TA Psychotherapy), Teaching and Supervising Transactional Analyst (P), is a psychotherapist, supervisor, and trainer. He works with individuals, couples, and practitioners both in his Edinburgh city-centre practice and in cyberspace. With a deep curiosity about how humans embody, relate, and shape their identities within cultural, political, and social contexts, he integrates his background in technology and organisational change into his therapeutic and teaching approach. His work explores the intersections of embodiment, identity, and community, fostering deeper awareness and relational engagement in clinical practice.

More at www.ronenstilman.com



Kristina Stojanović Čehajić, CTA - P & Marija Stanić, CTA-P

Stabilno i nestabilno u psihoterapijskom procesu

U ovoj radionici kroz kreativan, iskustveni proces zajedno istražujemo kako se stabilnost i nestabilnost pojavljuju u psihoterapijskom radu – i što s njima radimo kad se pojave. Krenut ćemo od pitanja koja nam se često otvaraju „u živo“: što unosi nestabilnost u terapijski proces? Kako se nosimo s nestabilnošću koju donosi klijent, a kako s onom koju donosimo mi kao terapeuti? Što radimo s nestabilnošću koja dolazi iz neposredne okoline, a što s nestabilnošću u širem društvenom kontekstu? I što kad se nestabilnost dogodi između nas – u samom odnosu – te kako je prepoznati i otvoriti prostor za reparaciju?

Radionica je poziv na zajedničko istraživanje i stvaranje smisla: kroz kreativne tehnike i refleksiju pratit ćemo kako se proces „ljudja“, što nas u tome podržava, a što nas odvodi u prebrzu stabilizaciju ili u izbjegavanje. Na kraju ćemo zajedno artikulirati kriterije: kada

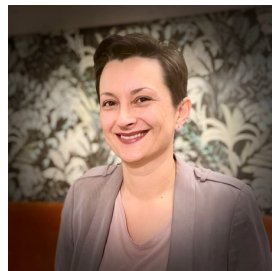
je nestabilnost dio zdravog procesa promjene, a kada signal da treba usporiti, tražiti dodatnu podršku ili ponovno ugovoriti okvir rada.

Radionica je namijenjena svim razinama u transakcijskoj analizi, uključujući i studente.



Marija Stanić, mag.praesc.educ. je certificirani transakcijski analitičar. Članica je Hrvatske komore psihoterapeuta te hrvatske, europske i svjetske organizacije za transakcijsku analizu —UTA, EATA, ITTA. Profesionalni put započela je u predškolskoj ustanovi u neposrednom radu s djecom, a tijekom edukacije iz transakcijske analize volontirala je na Plavom telefonu. Osnivačica je udruge Razumijevaonica koja se bavi mentalnim zdravljem i edukacijom odgojno-obrazovnih djelatnika. Danas radi psihoterapiju, savjetovanje i edukacije u privatnoj praksi, surađuje s Centar Proventus kroz provedbu različitih edukacijskih programa te se dodatno usavršava za edukatora i supervizora transakcijske analize.

Kontakt: info@marija-psihoterapija.com



Kristina Stojanović Čehajić, mag. psych., certificirana je transakcijska analitičarka (CTA-P), klinička supervizorica i doktorandica na Sveučilištu u Rijeci. U Rijeci vodi privatnu praksu usmjerenu na rad s odraslima, a u terapijskom i supervizijskom radu spaja relacijski pristup s perspektivama radikalne psihijatrije i konstruktivizma unutar okvira transakcijske analize. Suradnica je Centra Proventus, gdje sudjeluje u osmišljavanju i provedbi edukacijskih programa te se dodatno usavršava za edukatoricu i supervizoricu transakcijske analize. Uz klinički i edukacijski rad, posvećena je razvoju TA kroz istraživanje: u sklopu doktorskog rada proučava filozofsku, teorijsku i praktičnu (ne)kompatibilnost unutar TA pristupa. Zaposlena je i kao istraživačica u Centru za ženske studije pri Filozofskom fakultetu u Rijeci.

Kontakt: kristina@psiholoski-horizonti.hr



Petra Goršić PTSTA- P **Metaperspektiva (ne)stabilnosti**

Tijekom našeg profesionalnog psihoterapijskog razvoja suočavamo se sa posebnim izazovom: kako pratiti svoje reakcije, svoje osjećaje, svoja stanja i onda ih koristiti u psihoterapiji. Nošenje sa transferima i kontratransferima u psihoterapiji često je izazovan proces. Kada je neka emocija moja, a kada sam je „pokupila“ od klijenta? I šta to uopće znači „pokupiti je od klijenta“? Koliko od onog što osjećamo podijeliti s klijentom? I kako u svemu tome ostati u OK/OK poziciji? Što se dešava u svemu tome sa mojom stabilnosti, što sa stabilnosti klijenta? Kako stabilnost ili nestabilnost u našem odnosu utječe na proces psihoterapije?

Cilj ove radionice je predstaviti vam tehniku samorefleksije koja nam može dati odgovore na ova pitanja i kroz koju jačamo naše kapacitete za metakomunikaciju. Ovu tehniku možemo koristiti

za samosuperviziju, ali je i zanimljiv način kako možemo potaknuti naše edukante i supervizante na proširivanje kapaciteta za refleksiju i na kreativnost u pronalaženju načina kako koristiti svoje doživljaje u psihoterapiji. Polaznici će dobiti novi alat za širenje svjesnosti i kliničke osjetljivosti prema vlastitim i klijentovim emotivnim procesima.

Petra Goršić rođena je 1979. u Zagrebu. Odrastala je istovremeno u srcu grada na Šalati i u obližnjem selu Brdovcu. Živi sa svojom obitelji okružena prirodom, ljubimcima i vrtom. Voli ples, šetnje šumom, planinarenja, more i kampiranje. Po struci je klinički psiholog, CTA psihoterapeut i PTSTA-P. Language coordinator je EATAe za hrvatski i srpski jezik te članica Upravnog odbora Hrvatske komore psihoterapeuta.

U centru Budi svoj u Zagrebu radi od 2021. kao psihoterapeut, supervizor i učitelj transakcijske analize. Bitno joj je iskreno se povezati sa svojim klijentima, supervizantima i edukantima, te stvoriti atmosferu slobode, zaigranosti i znatiželje. U svom radu često istražuje unutarnji svijet svojih klijenata kroz kreativne tehnike, asocijativne karte i rad sa snovima.



Helen Blackburn PTSTA - P

"The Myth of Stasis, Being in the Flow of Life."

It is generally agreed that to thrive and be happy, we humans best co-exist within a stable environment. Yet there are times we need to take risks, to follow our curiosity, to stretch and challenge ourselves to feel really alive. At other times we must weather the storms of natural and human made disasters, of birth and death, of success and failure. A helpful enquiry into these apparent contradictions may start with the human body, which requires movement and agility to feel balanced and stable. Our bodies need to regulate our thoughts, emotions, nervous systems and core strength; this involves many reciprocal,

vibrant connections, human and non-human, all interwoven.

The aim of this workshop is to shine a light on the qualities and resources which we require to reach deeply into our true selves to be strong yet supple, responsive yet directive, as we move within the flow of life.

Working experientially and creatively Helen will guide participants in their inquiry into an ecological approach to developing resilience and flexibility. Accounting for our profound need for relationship with nature, artistic creativity and the interhuman, this practice is inspired by her life experience and work with Fanita English's 3 Drives theory. We will explore how these fundamental connections help us, and our clients, expand our capacity to experience and process change at depth.

There will be solo, pair and group exercises to bring awareness to the meaning these aspects already have in our lives, and how they can be developed and integrated both personally and professionally. We will also discuss and reflect on clinical case studies to provide each participant with practical tools to bring this into their practise.

Helen is an Ecological TA practitioner based in West Wales, UK. She is committed to providing psychotherapy, supervision and training in a way that honours our reciprocal relationship with the land. Her woodland garden not only informed but could continuously play a large part in helping her shape and develop her approach, which includes working outdoors with therapy clients and supervisees, and offering nature based CPD courses. She also loves playing music, sharing meals and hilarity with friends and family, gardening, swimming and train travelling. You can find out more about Helen and her practice at beyondthegarden.uk

Teme Okruglih stolova

1. Pokretanje samostalnog poslovanja u nestabilnom svijetu

Što vas potiče da (ste) otvorili samostalnu praksu — i što vas je u tom procesu najviše destabiliziralo?

Može li se danas uopće govoriti o “stabilnoj” samostalnoj praksi — ili je fleksibilnost nova stabilnost?

Pitanja za dijalog:

- Kako nestabilnost utječe na naše odluke o pokretanju i razvoju samostalne prakse?
- Kako naši odnosi s mentorima, kolegama i klijentima oblikuju naš osjećaj sigurnosti i profesionalne stabilnosti?
- Kako društveni i ekonomski kontekst utječe na održivost psihoterapijske prakse danas?
- Kako možemo graditi profesionalni identitet koji je istovremeno stabilan i fleksibilan u uvjetima stalnih promjena?

2. TA stručnjaci u svijetu koji se ljuđa

Stabiliziramo li – ili transformiramo?

Kako radimo kao TA stručnjaci danas, u kontekstu globalne i lokalne nesigurnosti?

Rasprava govornika:

- Utjecaj društvene nestabilnosti na profesionalni odnos (terapijski, edukacijski, supervizijski, mentorski)
- TA kao alat stabilizacije ili kao poticaj transformaciji
- Društvena odgovornost i potencijal TA stručnjaka
- Gdje su granice profesionalne uloge u kriznim vremenima?

3. Ranjivost: slabost ili izvor snage?

TA perspektiva u vremenima nesigurnosti

Preispitivanje ideala snage, otpornosti i autonomije u duboko destabiliziranom svijetu.

Rasprava govornika:

- Ranjivost i autonomija
- Društveni narativi o „jakosti“ i profesionalnoj kompetentnosti
- Ranjivost u kontekstu rastućih društvenih podjela
- Uloga ranjivosti u profesionalnom razvoju i praksi
- Kako TA teorija i praksa konceptualiziraju ranjivost?

4. Put prema CTA-u - rast koji destabilizira

Kako se mijenjamo na tom putovanju?

TA edukacija nije samo profesionalni proces – ona duboko zadire u identitet, odnose i životne uloge.

Pitanja za dijalog:

- Što sve možemo (i trebamo) očekivati na tom putovanju?
- Koliko je nestabilnost nužan dio profesionalnog rasta?
- Kako se osnažiti i koji su resursi dostupni – individualni i kolektivni?